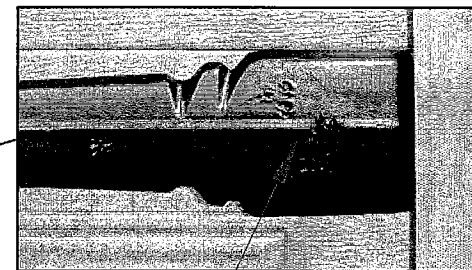
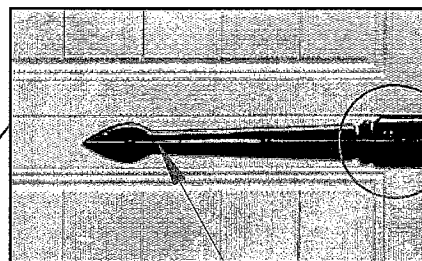
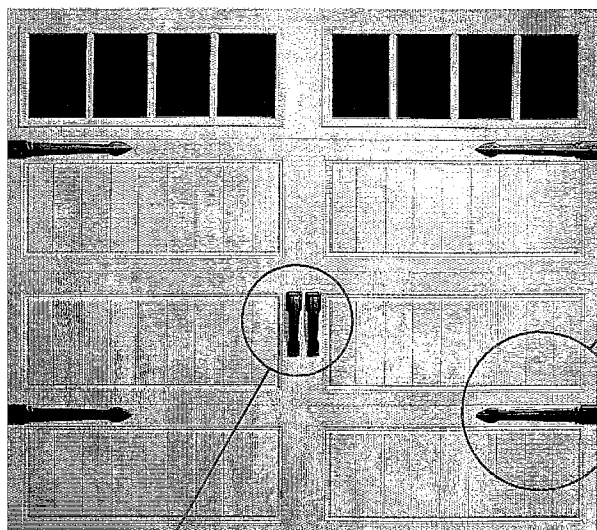
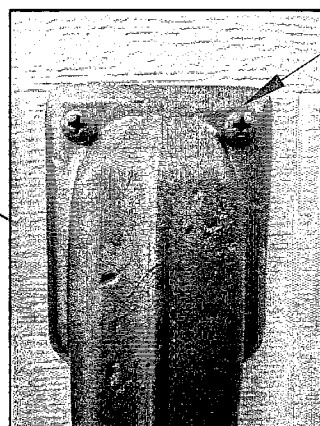
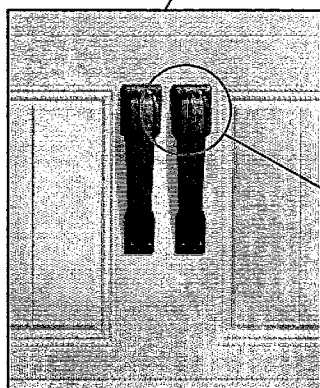


How to install your decorative Hinges/Handles



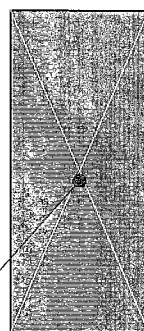
#10 X 3/4" SCREW
Qty. 3 per Hinge

Decorative Hinge to be centered on top rail

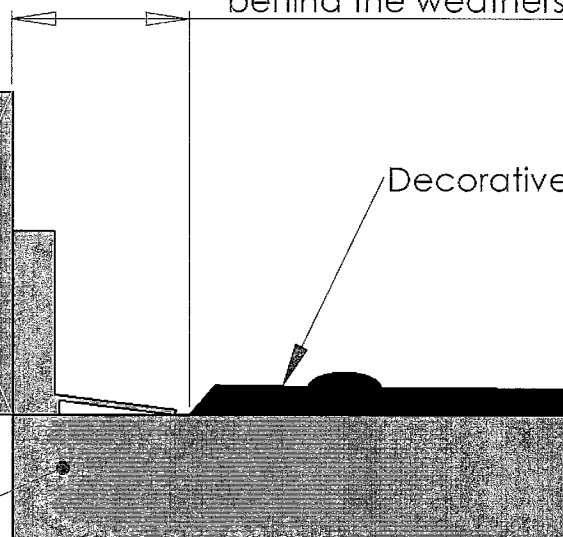


#10 X 3/4" SCREW
Qty. 4 per Handle

Spacing according to the weatherstrip installation. Hinge should not be behind the weatherstrip.



Door Frame



Garage Door Panel

Decorative Hinge

Hinge Kit includes 4 hinges and 12 screws.
Handle Kit includes 1 handle and 4 screws.

Tools Required for Installation:
Drill, 1/8" Drill Bit, Phillips Screwdriver, Tape Measure

Pre-drill hole with 1/8" drill bit then use phillips head screwdriver to install Hinge/Handle

Suggested installation of the decorative hinge relative to the weatherstripping